



PROJECT
CLIENT
VALUE
CONSULTANT

CONSTRUCTION OF NEW SPORTS HALL
WALLINGTON HIGH SCHOOL FOR GIRLS
£2M
ADP LIMITED, GIFFORDS



SCOPE OF WORK

The project comprised the construction of a new sports hall and activity studio, two new student changing rooms and staff facilities at Wallington High School for Girls, Woodcote Road, Wallington, SM6 0PH.

BREEAM RATED 'VERY GOOD'

The project embraces an approach to sustainability that goes beyond green materials and reducing carbon emissions. Low carbon technology and a thermally efficient building envelope has resulted in lower running costs, compared with a building of conventional construction. The construction process was used as a learning resource for the school, feeding into curriculum lessons.

The project maximises the use of daylighting and natural ventilation. The external building envelope is thermally efficient with high insulation values and air tight construction. Sustainable and responsibly sourced materials were used throughout. Low water usage sanitaryware was installed in the changing rooms.

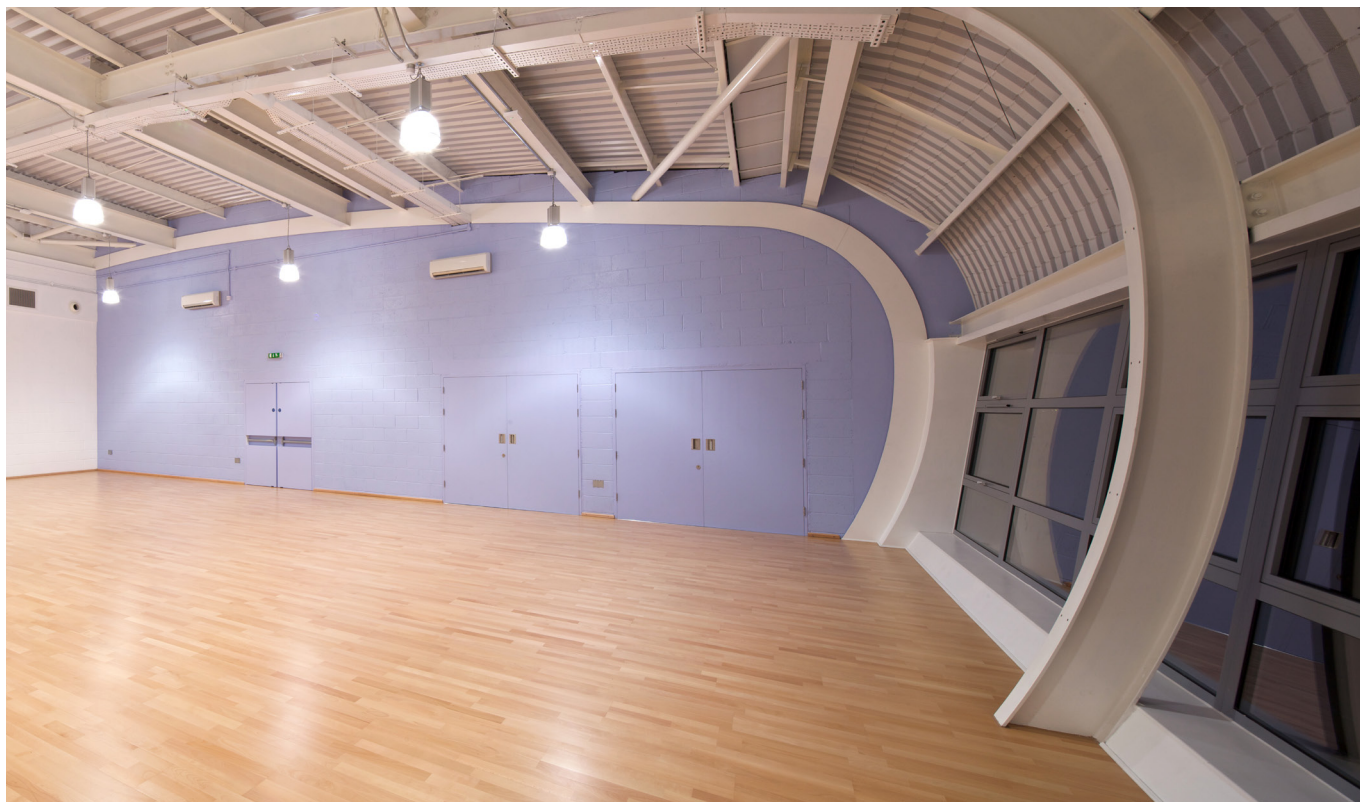
Significant carbon reductions have been achieved thanks to an array of photovoltaic panels on the roof. High efficiency services were installed throughout the building, utilising low energy lighting, low energy fans with heat recovery, and high efficiency condensing boilers.

“I am both proud and delighted to see my vision realised, which will now provide such an excellent facility for both present and future students in the school.”

Mrs Greatorex, Headteacher of Wallington High School for Girls

Lakehouse, 1 King George Close, Romford, Essex RM7 7LS Tel: 01708 758 800 Email: www.lakehouse.uk.com





CONTRACT DETAILS

Start date: 22 November 2010

End date: 26 September 2011

Duration: 45 weeks

Form of contract: JCT Standard Building Contract, with Quantities 2005

CONSTRUCTION ELEMENTS

- Deep strip concrete foundations
- Structural steel frame
- Brickwork and render
- Kalzip cladding and roofing

CONSIDERATE CONSTRUCTORS SCHEME



The project was registered with the Considerate Constructors Scheme (CCS).

Sites and companies that register with the Scheme are monitored against a Code of Considerate Practice, designed to encourage best practice beyond statutory requirements.

The Scheme is concerned about any area of construction activity that may have a direct or indirect impact on the image of the industry as a whole. The main areas of concern fall into three categories: the general public, the workforce and the environment.

GRAND OPENING

Joanna Parker, Britain's No. 1 table tennis player, was the guest speaker at the opening of the new sports hall on 13 December 2011. The Lakehouse team joined the Mayor and Mayoress of Sutton, MP Tom Brake, staff and pupils to celebrate the completion of the new facilities. The story of the sports hall build was told through a slide show illustrating all the different stages of the construction and ending with students enjoying and benefiting from the amazing resource.

Planning for the sports hall had taken years. Overcoming the difficulties of funding and planning permission on Green Belt land had been considerable challenges. Headteacher Mrs Greatorex said; *"I'm both proud and delighted to see my vision realised, which will now provide such an excellent facility for both present and future students in the school."*



BREEAM STATISTICS

Basic building cost (incl. drainage)

£ 965/ m²

Services costs (incl. photovoltaic)

£ 435/ m²

External works cost

£ 103/ m²

Gross floor area

1324 m²

Total area of site

0.34 ha

Function areas and their sizes

Sports Hall 602m²

Activity / Dance Studio 152m²

Changing facilities 176m²

Office 21 m²

Plant room 44m²

Area of Circulation

174 m²

Area of Storage

118 m²

Predicted Electricity Consumption

52,500 kWhrs

Predicted Fossil Fuel Consumption

88,000 kWhrs

Predicted Renewable Energy Generation

12,500 kWhrs

Predicted Water Use

10 m³/ person/ year. As this is a Sports Hall, water use is high when compared with typical school figure 4m³/year.