



QUEEN'S HOSPITAL
 VALUE £2.2M
 BARKING, HAVERING &
 REDBRIDGE NHS TRUST

This major scheme comprised the internal refurbishment of an existing industrial unit to create mezzanine floor, offices and extensive medical records storage facilities for Queen's Hospital. Work included the completion of a new roof, an extensive mechanical and electrical installation and the provision of specialist medical racking at this state-of-the-art facility, accommodating around 70 staff.



NEWHAM GENERAL HOSPITAL
 VALUE £1.2M
 NEWHAM HEALTHCARE
 NHS TRUST

Lakehouse has a long and distinguished working relationship with Newham General Hospital.

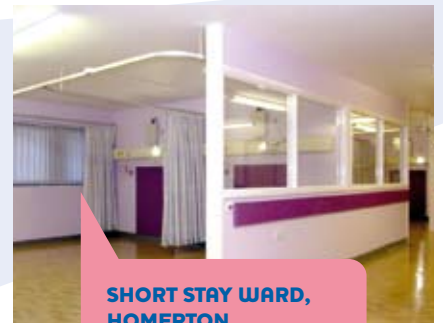
Projects range from minor refurbishments to the creation of the 'Greenway Centre', an innovative 'walk-in and wait' sexual health centre which delivers advice, information, screening, treatment and follow-up for sexually transmitted infections.

St. James's House provides innovative services for people who are disabled by mental health problems and seeks to address and improve their mental health and social status through supporting their recovery and rehabilitation.

This former Victorian Nursing Home was sympathetically converted into a Drugs Rehabilitation Centre, including the fast-track completion of a 2-storey extension for people requiring secure care and assistance.



ST JAMES'S HOUSE, DRUGS REHABILITATION CENTRE
 VALUE £693K
 CAMDEN & ISLINGTON
 NHS TRUST



SHORT STAY WARD, HOMERTON UNIVERSITY HOSPITAL
 VALUE £371K
 HOMERTON HOSPITAL
 NHS TRUST

Fast-track refurbishment of existing office space was undertaken at this innovative foundation hospital due to pressure to provide much needed bed space.

Thomas Audley, a 12-bed short stay ward, was completed to tight timescales, following an earlier successful new build scheme to provide office accommodation.