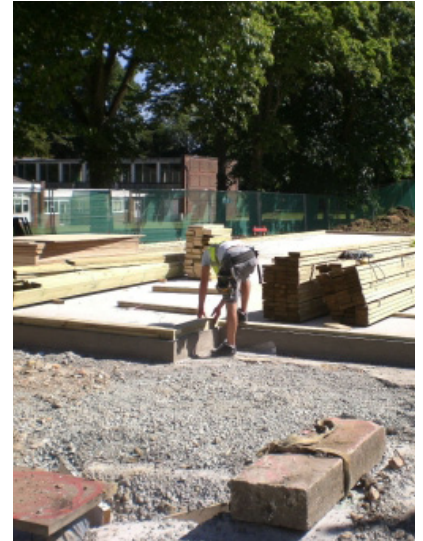




**PROJECT**  
**CLIENT**  
**VALUE**  
**CONSULTANT**

**NEW BUILD AT LODGE SCHOOL**  
**LODGE SCHOOL**  
**£600K**  
**CYRIL SWEETT**



Lodge School, Purley, is a co-educational school for children from Nursery through to Sixth Form. The school was operating to a very tight build programme and Lakehouse was approached in February 2008 to advise on the construction process and negotiate a fixed price to carry out the work with only a general layout drawing, elevations and a basic cost plan.

It had been hoped that works would start on site in April and finish by September, enabling the buildings to be used by the new inset of pupils. Due to several planning objections, this was not possible and planning was finally granted in June. Whilst awaiting the decision Lakehouse minimised disruption by carrying out a gas diversion and, where possible, has since simplified works to reduce the construction period.

This included stick building the timber frame on site rather than using a timber frame company that was quoting 6-8 weeks. The construction period was four weeks from receipt of order to completed erection on site. To eliminate the drying process, Lakehouse suggested using a timber floating floor over the under floor heating as an alternative to screed.

Lakehouse's south west regional office was responsible for this project.